



SALT SPREADERS

British Built for British Winters

Logic professional Salt Spreaders feature hopper length moving floor & agitator to spread wet rock salt and all granular de-icing products



- Stainless steel hoppers, spreading disc and peripheral components for long life.
- Application control is very accurate with the ability to spread varying widths and cast to the left or right.
- Filling height is low and operation adjustments are easy to carry out.



Designed to be towed by or mounted on a wide range of vehicles.
Effective, reliable and efficient winter maintenance.



See them in action on line...visit our website at www.dialadigger.co.uk



LOGIC TRAILED SALT SPREADERS

These can be teamed up with a wide range of vehicles, to provide a reliable winter maintenance capability.

Ground Driven GDS150 and GDS250 models are available with two options of equipment. The 'R' models have full lighting and mudguards, the 'S' models have no lighting or mudguards, when the machine would only be used on a private site or in a traffic free environment.



• GDS150R with optional GDS158 tonneau cover



• GDS251R with high speed gearbox and optional GDS106 flashing beacon

Spreading widths of 1.5-10.0 metres or 3.0-14.0 metres, both at forward speed of between 5-15mph are achievable, model dependent.



GDS150R



GDS250R
with the standard gearbox



PDS354RB
with PDS208 tonneau cover

Engine Driven PDS354RB provides a full 'Highway Use' specification, type approved by the VCA. Travelling at normal road speeds allows maintenance of multiple sites in different locations, which makes it ideal for contractor use. Once the engine speed is set, the spreading mechanism can be switched on and off using the wired remote control box mounted in the cab of the towing vehicle, within easy reach of the driver.

Increased work rates are achievable with the ability to drive at normal road speeds, as well as utilising a wide variety of suitable towing vehicles.

Powered systems are supplied with a control box to allow easy operation from the drivers seating position, (right). There is an ample wiring harness to mount the box in any suitable position.



• PDS354RB with PDS106 flashing beacon



Designed and manufactured in the UK... top quality equipment that works!

MOUNTED SALT SPREADERS **LOGIC**

3 Point Linkage, Fork Lift or Deck Mounted models, for easy installation and operation.



• PDS150T

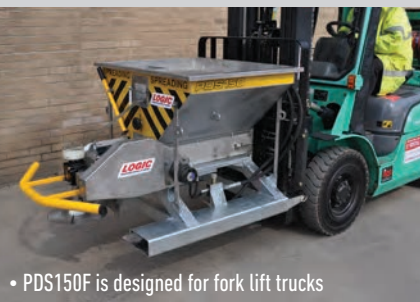
3 Point Linkage Mounted Unit PDS150T provides a compact easy to use system with a low filling height, low centre of gravity and even distribution of weight during the spreading process which is important for vehicle stability.

Fork Lift Units PDS150F and PDS150F1 are hydraulically driven and sized to fit onto the tines of a fork lift or telehandler. Their design provides a low filling height and low centre of gravity. Mounting is very simple, using pallet fork tubes to slide into with locking pins behind the fork uprights. PDS150F units are suitable for machines 1.5T to 3.5T with up to 70lt/min oil flow rate. PDS150F1 units are suitable for machines 3.5T + with 70+lt/min oil flow rate.

Hydraulic motor drive requires a minimum of 25lt/min to provide a spread width range of 3.0-14.0 metres. Hydraulic pipes couple into the vehicles auxiliary service.



• Oil flow control valve to adjust spread widths



• PDS150F is designed for fork lift trucks



• PDS150F1 units are designed for larger telehandlers with a higher oil flow rate



PDS150D

Deck Mounted Units mounting onto a vehicle rear platform is enhanced by rubber pads under the chassis to grip the surface. Integral ring mounts are included to assist securing with tie down straps. PDS150D can be mounted into any suitable utility vehicle or pick-up (shown below).



• PDS150D



PDS354D

Deck Mounted Units can be secured into a pick-up, flat bed truck or onto a trailer. Importantly, this deck mounted version has a gross weight of 1000kg which makes it ideal for the 1 tonne capacity 4x4 pick-up (shown below) as well as other suitable vehicles. This makes use of an existing fleet vehicle as a professional salt spreading asset.



• PDS354D

The PDS range has application rates of between 5-80 gr/sq m and can spread salt from 3.0-14.0 metres which is variable through adjusting the engine rpm and drive pulley option. The unit can cast to the left or right, allowing it to spread under parked cars. PDS354D secured into a trailer provides another option.



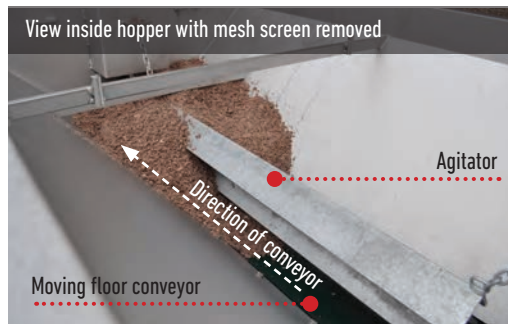
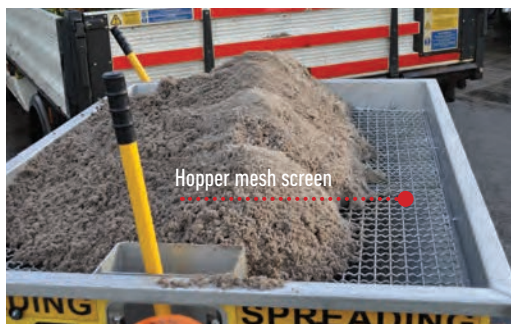
British Built for British Winters... top quality equipment that works!

LOGIC SPECIFICATION DETAILS

Logic professional Salt Spreaders spread all de-icing products **including wet rock salt!**

FEATURES: COMMON TO ALL GDS & PDS SALT SPREADERS

- Hopper length 'moving floor' technology as found in highway sized machines, with agitator to handle any de-icing products including wet rock salt.
- Stainless steel hopper, spreading disc and peripheral components for long life.
- Accurate application control with the ability to spread varying widths and cast to the left or right.
- Low filling height - operation adjustments are easy to carry out.
- Woven stainless steel mesh screen to remove foreign objects from the hopper.



OPTIONAL EQUIPMENT



Flashing beacon
GDS106 for GDS251S/R,
 GDS250S/R, GDS150S/R
PDS106 for PDS354RB, PDS354D



Tonneau cover complete with support
GDS158 for GDS150S/R, PDS150D/T/F/F1
GDS108 for GDS251S/R, GDS250S/R
PDS208 for PDS354RB/D



Disc shroud
PDS210 for PDS354RB, GDS251S/R,
 GDS250S/R, PDS150T, PDS150F/F1
PDS211 for PDS354D, PDS150D
LDS210 for LDS120DS

Salt Spreader model specification and application rate details

Type	Model	Hopper Capacity lts / kg	Length mm	Width mm	Height mm	Unladen Wt / kg
TRAILED	LDS120DS	120 / 130 dry salt	1960	1575	1225	84
TRAILED	GDS150S/R	270 / 335 rock salt	2310	1300/1290	1080	238/220
TRAILED	GDS250S/R & GDS251S/R	465 / 600 rock salt	3020	1300/1290	1030	298/279
TRAILED	PDS354RB	585 / 750 rock salt	3120	1600	1270	386
DECK MOUNTED	PDS150D	270 / 335 rock salt	1565	1140	1030	195
DECK MOUNTED	PDS354D	585 / 750 rock salt	2100	1200	1105	272
3pt LINKAGE	PDS150T	270 / 335 rock salt	1800	1077	917	230
PALLET FORKS	PDS150F/F1	270 / 335 rock salt	1744	1080	950	245

Example spread rates with a full load of Rock Salt (335kg) (600kg) (750kg)

Model	Spread Rate g/m ²	Distance covered km at 1.5m width - eg. footpath	Distance covered km at 6.0m width - eg. roadway	Total area covered m ²
GDS150 / PDS150	10	22 / 40 / 50	5.6 / 10 / 12.5	33,500 / 60,000 / 75,000
GDS250 / GDS251	20	11 / 20 / 25	2.8 / 5 / 6.25	16,750 / 30,000 / 37,500
PDS354	50	4.5 / 8 / 10	1.1 / 2 / 2.5	6,700 / 12,000 / 15,000
	80	2.8 / 5 / 6.25	0.7 / 1.25 / 1.56	4,200 / 7,500 / 9,3700

Spread rate calculations based on industry standard values for rock salt of between 1.24kg and 1.28kg per litre

DE-ICING & ANTI-ICING—SPREADERS / SPRAYERS

When rock salt cannot be used, we have a range of equipment for specialist free flowing products or liquids for de-icing and anti-icing uses. These are ideal for treating more sensitive areas, eg. hospital grounds, schools, airports and railway stations, etc.

LDS120DS Spreader requires dry bagged salt or free flowing de-icing products. Ground driven, shown here with optional disc shroud to limit spread width to 1.0 metre.



Electro broadcaster range of spreaders with 85-300lt capacity, suitable for free flowing de-icing products.



Trailed sprayer with 270lt capacity. Suitable for brine or de-icing liquids, with specialised coated framework to prevent corrosion. Towed by any suitable vehicle.

Mounted models 60-270lt capacity, suitable for ATVs, UTVs and pick-ups, etc. **Check the Logic website for more details.**

DIALADIGGER.CO.UK

0800-0-853-853

WWW.DIALADIGGER.CO.UK

info@dialadigger.co.uk

L-WM-G



Videos available online

This symbol indicates a video of the product in action is available on our website at LogicToday.co.uk

Designed and manufactured in the UK... top quality equipment that works!